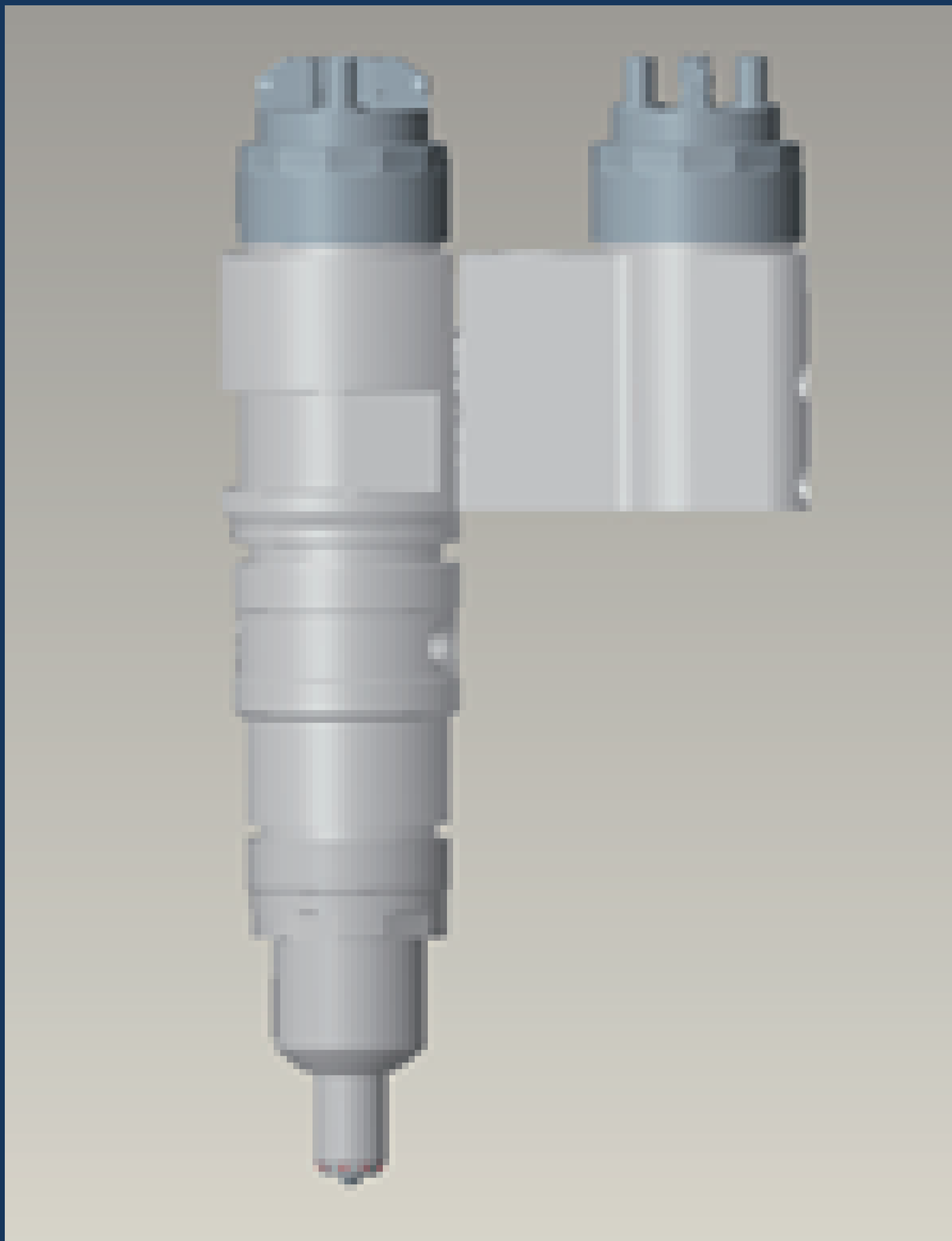




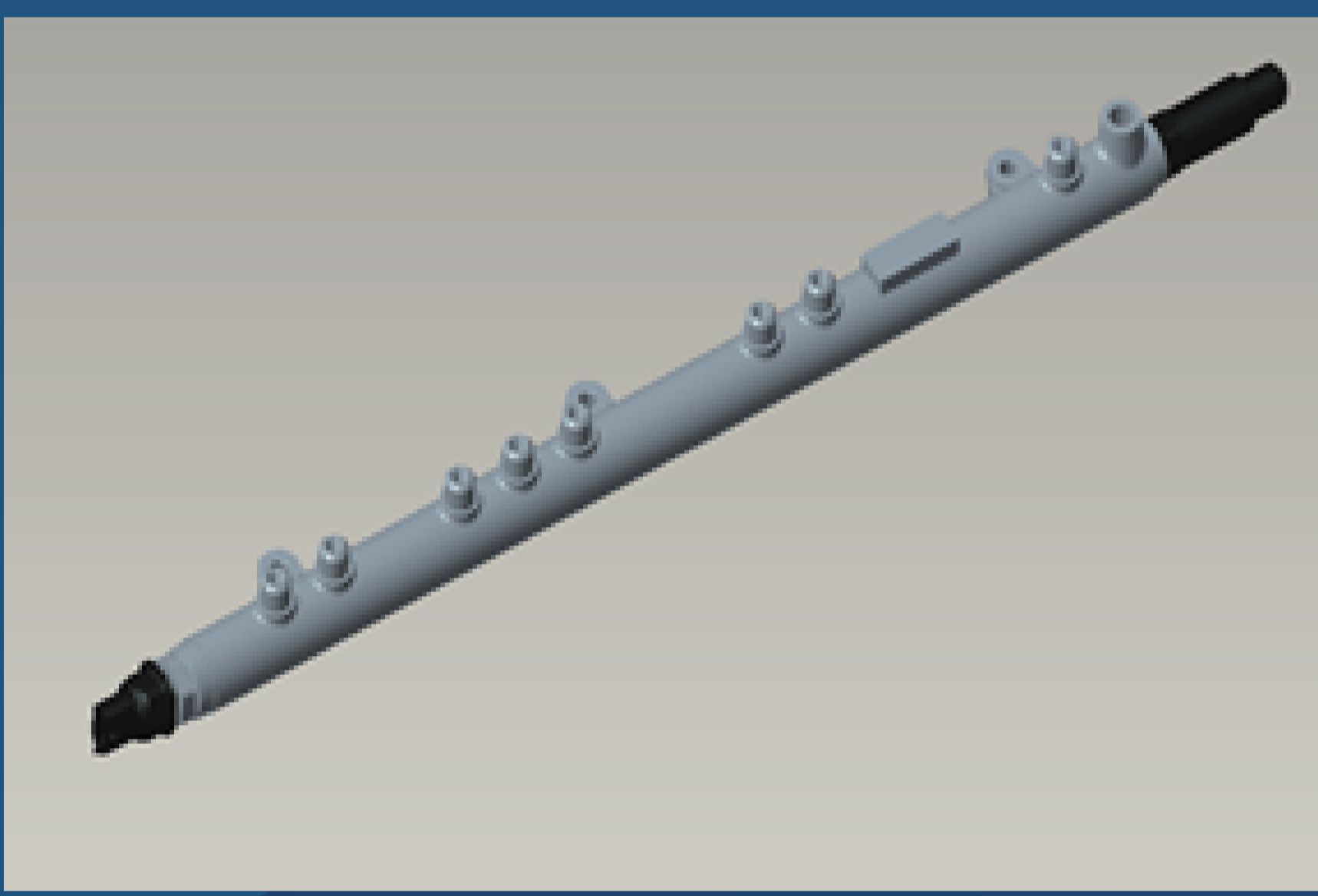
# Bi-Fuel Methanol Direct Injection System (BMDi™)

## Highlights:

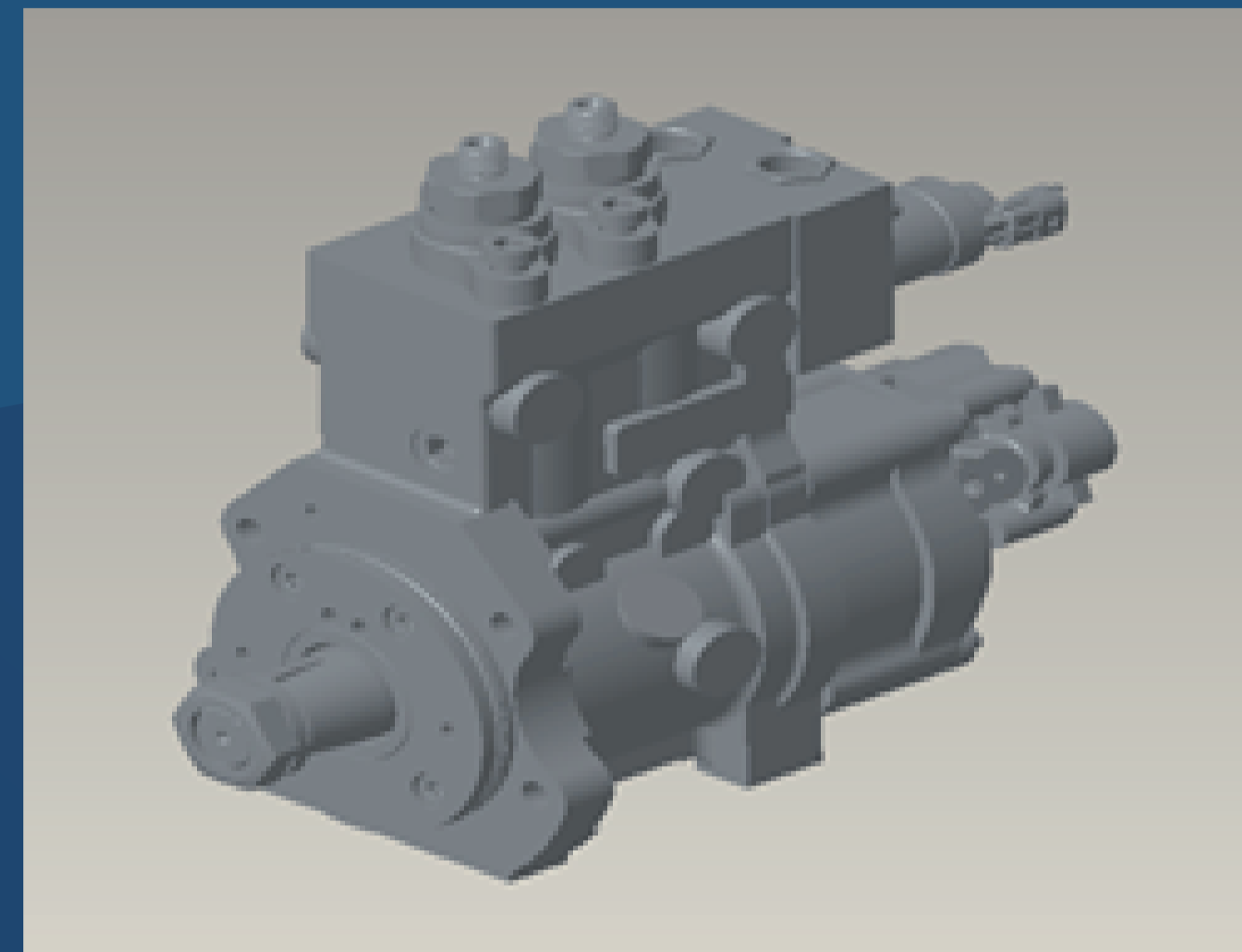
- Plug-and-Play Bi-Fuel Methanol Direct Injection System (BMDi™).
- Minimal hardware customization to OEM diesel engine
- Suitable for engine with bore sizes 110-140mm.
- The system also includes other sensors and executive components, etc.



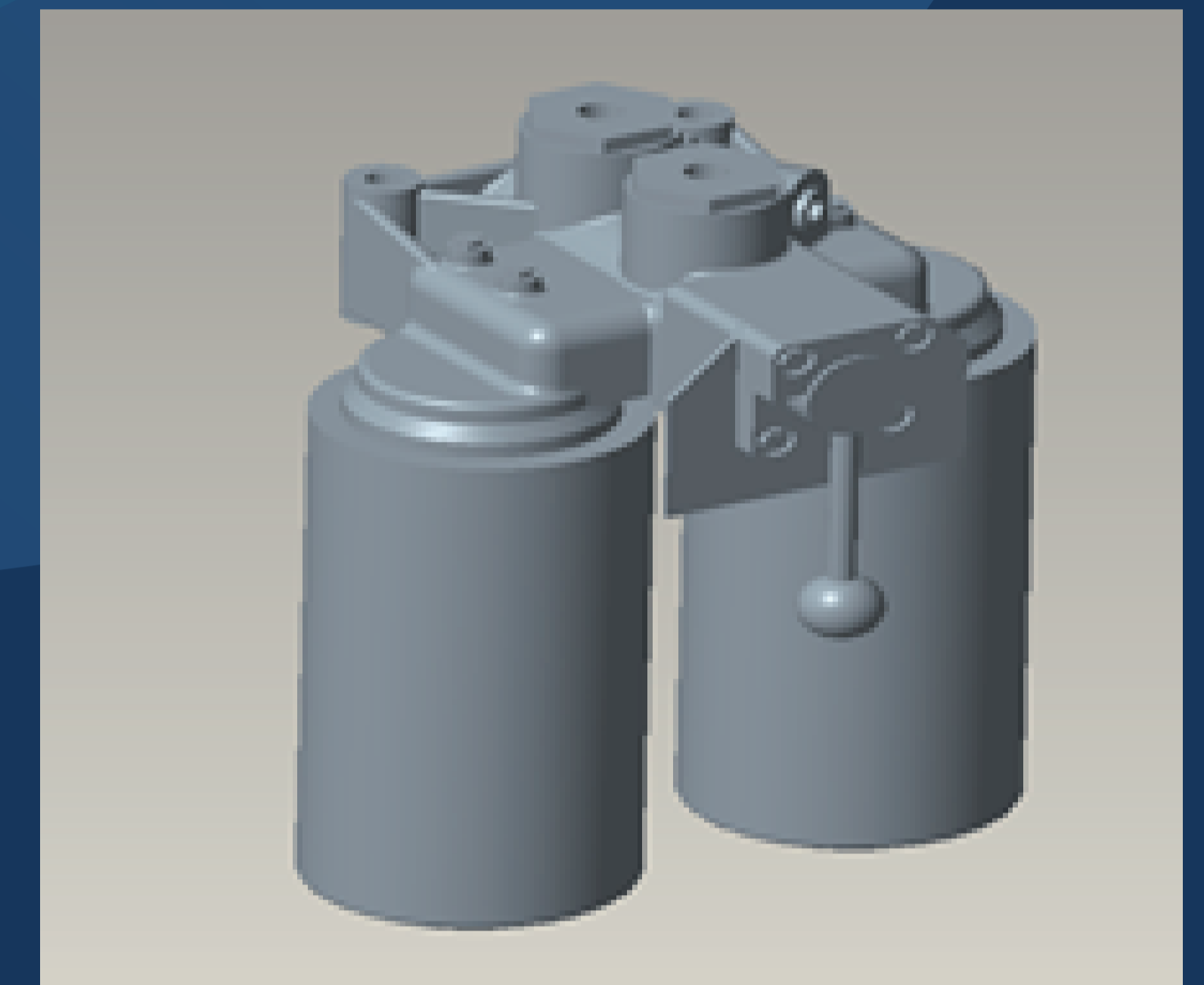
Dual Fuel Injector



Common Rail



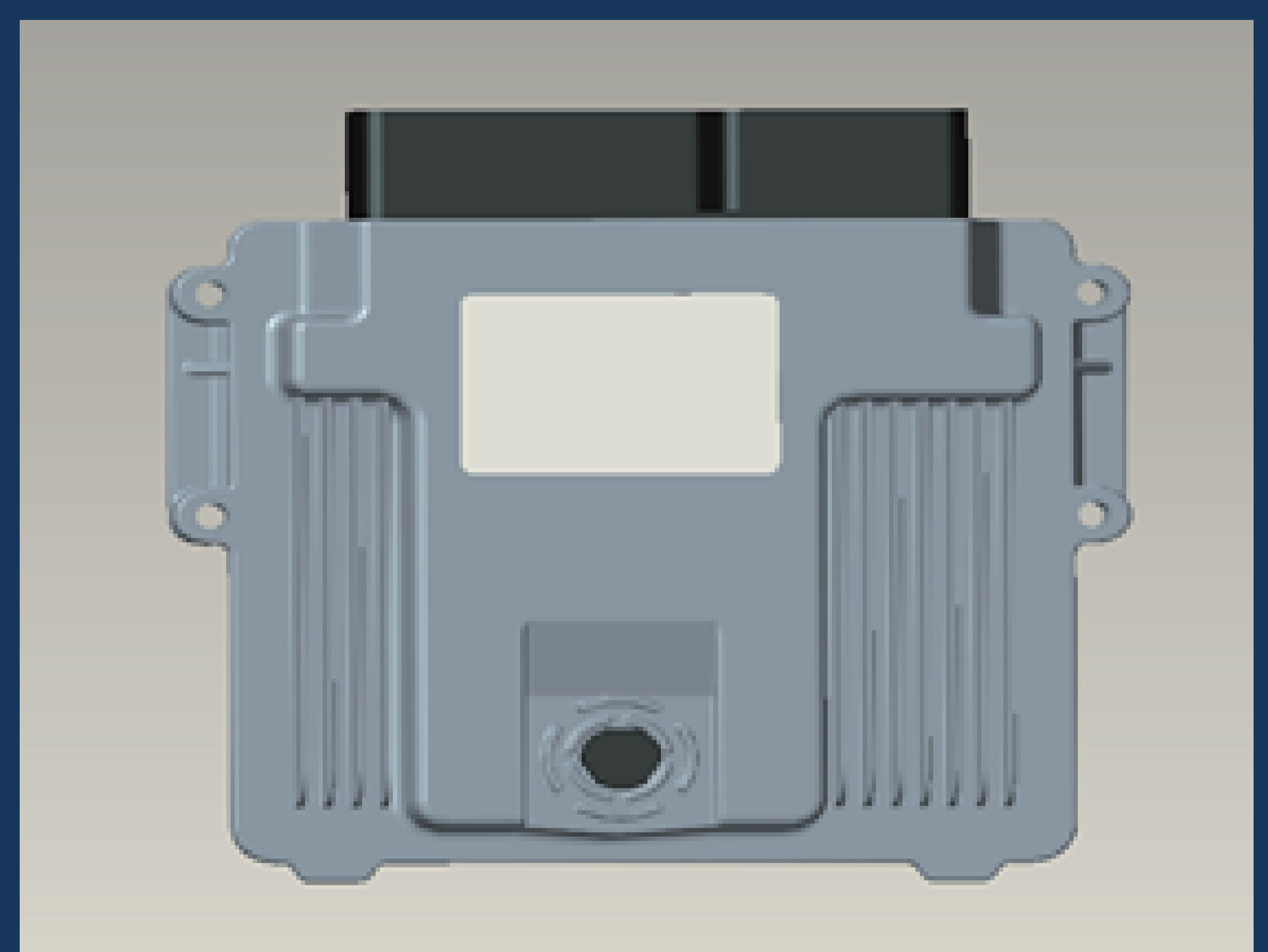
Fuel Supply Pump



High-Nano Filter

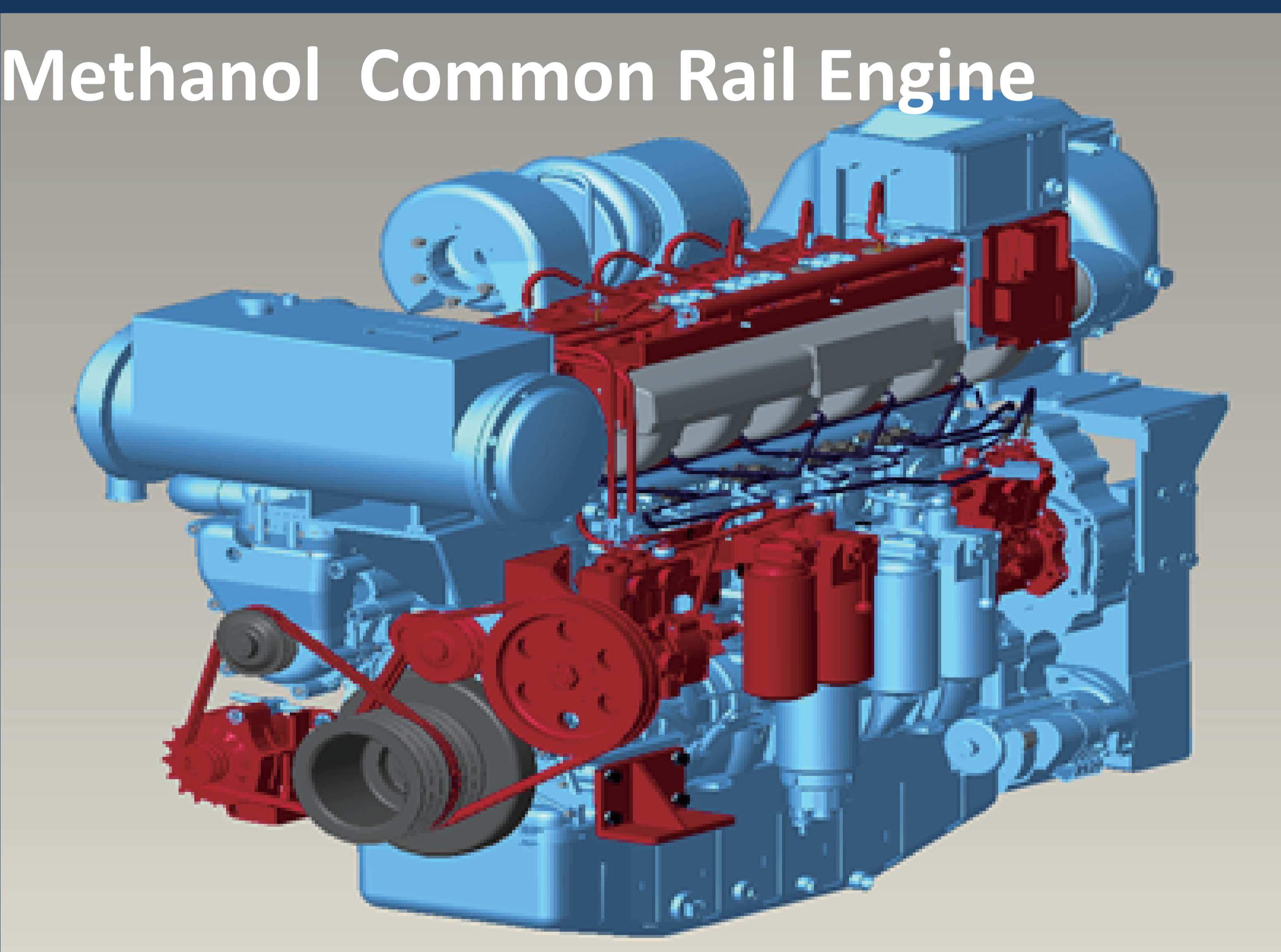
## Deliverables:

- Co-development with OEMs to achieve Methanol Direct In-cylinder Injection on Existing Diesel Engine Platform
- One-stop turnkey injection system including mechanical / hydraulic and the associated electronic components etc.
- Developed and validated to rigorous OEM standards with full technical support from POC to POV



Proprietary Software/ECU

## Methanol Common Rail Engine



## Advantages:

- Compact packaging – Methanol and diesel fuel injectors are integrated
- Quickly applied to most engine models with the same/similar displacement (12 – 15L)
- Controlled ignition achieved by high-pressure common rail injection

Note:

Red shaded indicates BMDi™ executive components/ system and Blue shaded indicates original OEM diesel engine